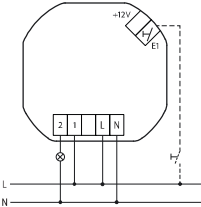


IMPULSE SWITCH WITH INTEGRATED RELAY FUNCTION WITH IP, MATTER VIA WI-FI,
OPTIONALLY ENOCEAN, 1 NO CONTACT POTENTIAL FREE 16A, ESR64PF-IPM



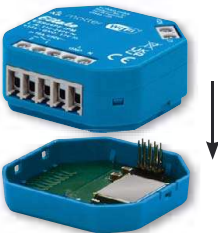
Typical connection



ELTAKO Connect-App
<https://eltako.com/redirect/eltako-connect>



Manuals and documents in further
languages:
[https://eltako.com/redirect/
ESR64PF-IPM](https://eltako.com/redirect/ESR64PF-IPM)



ESR64PF-IPM with adapter
EOA64



Manuals and documents in further
languages:
[https://eltako.com/redirect/
AP64ESRPF+E](https://eltako.com/redirect/AP64ESRPF+E)

ESR64PF-IPM



Impulse switch with integrated relay function with IP, Matter via Wi-Fi, optionally EnOcean, 1 NO contact potential free 16 A/250 V AC, 230 V LED lamps up to 600 W, 230 V incandescent lamps and halogen lamps 2000 W. REST-API. Only 0.5 watt standby loss.

For installation. 46 x 45 mm, 20 mm deep.

The connection terminals are screw terminals for conductor cross-sections up to 2.5 mm².

Contact switching at zero crossing to protect contacts and lamps.

Supply and control voltage 12 V DC or 110-240 V AC.

State-of-the-art hybrid technology combines advantages of nonwearing electronic control with high capacity of special relays.

With control input for a control button or switch that may be mounted in front of it.

Glow lamp current is not permitted.

The Wi-Fi link uses the 2.4 GHz frequency band and permits **Over-the-Air updates (OTA)**.

This actuator is Matter certified and can therefore be taught-in into different ecosystems and operated in parallel.

To control via Matter, a compatible Matter controller is required for each ecosystem. For Apple Home, for example, a Homepod mini, for Amazon Alexa, for example, a compatible Echo Dot and for Google Home, for example, a Nest mini.

As an option, the actuator can be configured via the **ELTAKO Connect-App**.

A development version of the REST API is available through the device's online product page. This is continuously being further developed.

The range of functions can be expanded using plug-on adapters. The EnOcean adapter (EOA64) enables access to the EnOcean ecosystem.

Further information on this can be found on the product page of the respective adapter.

ESR64PF-IPM	Impulse switch with integrated relay function with IP, Matter via Wi-Fi, optionally EnOcean, 1 NO contact potential free	Art. No. 30064021
EOA64	EnOcean plug-in adapter for series 64	Art. No. 30064026
AP64ESRPF+E	Actuator pack ESR64PF-IPM with EnOcean plug-in adapter EOA64	Art. No. 30064022